

# Rowell Ranch Rodeo Parade

## Castro Valley Blvd.

### Saturday, May 9, 2020

#### 10 AM to about Noon\*

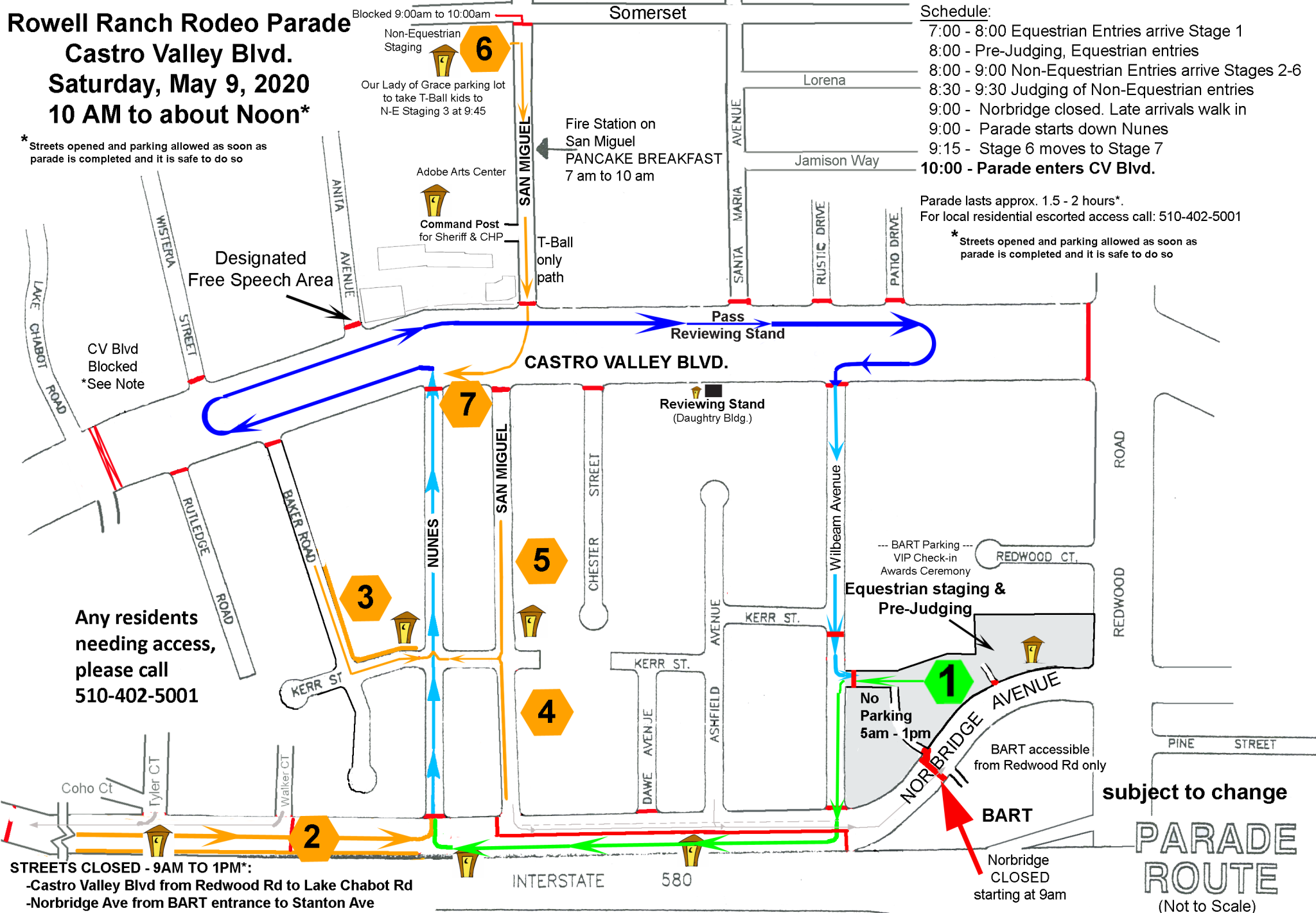
\*Streets opened and parking allowed as soon as parade is completed and it is safe to do so

#### Schedule:

- 7:00 - 8:00 Equestrian Entries arrive Stage 1
- 8:00 - Pre-Judging, Equestrian entries
- 8:30 - 9:00 Non-Equestrian Entries arrive Stages 2-6
- 9:00 - 9:30 Judging of Non-Equestrian entries
- 9:00 - Norbridge closed. Late arrivals walk in
- 9:00 - Parade starts down Nunes
- 9:15 - Stage 6 moves to Stage 7
- 10:00 - Parade enters CV Blvd.**

Parade lasts approx. 1.5 - 2 hours\*.  
For local residential escorted access call: 510-402-5001

\*Streets opened and parking allowed as soon as parade is completed and it is safe to do so



**STREETS CLOSED - 9AM TO 1PM\*:**  
 -Castro Valley Blvd from Redwood Rd to Lake Chabot Rd  
 -Norbridge Ave from BART entrance to Stanton Ave  
 -All local streets bounded by above.

**NO PARKING - 7AM TO 1PM\* on:**  
 -Castro Valley Blvd from Redwood Rd to Lake Chabot Rd  
 -Norbridge Ave from Wilbeam Ave to Stanton Ave  
 -Nunes Ave and San Miguel Ave from CV Blvd & Norbridge Ave  
 -Kerr St from Baker Rd to San Miguel Ave. Baker Ave as noted

\*Streets opened and parking allowed as soon as parade is completed and it is safe to do so \*

- Street blocked to traffic
- Equestrian Staging (1) & Path
- Non-Equestrian Staging (2-6) & Paths
- Entry/exit path for all entries except T-Ball
- Parade Path, Castro Valley Blvd.
- Indicates Porta-Pottie Toilet approx. location

Entries will receive their staging instructions via email a few days prior to the event.

**PARADE ROUTE**  
(Not to Scale)